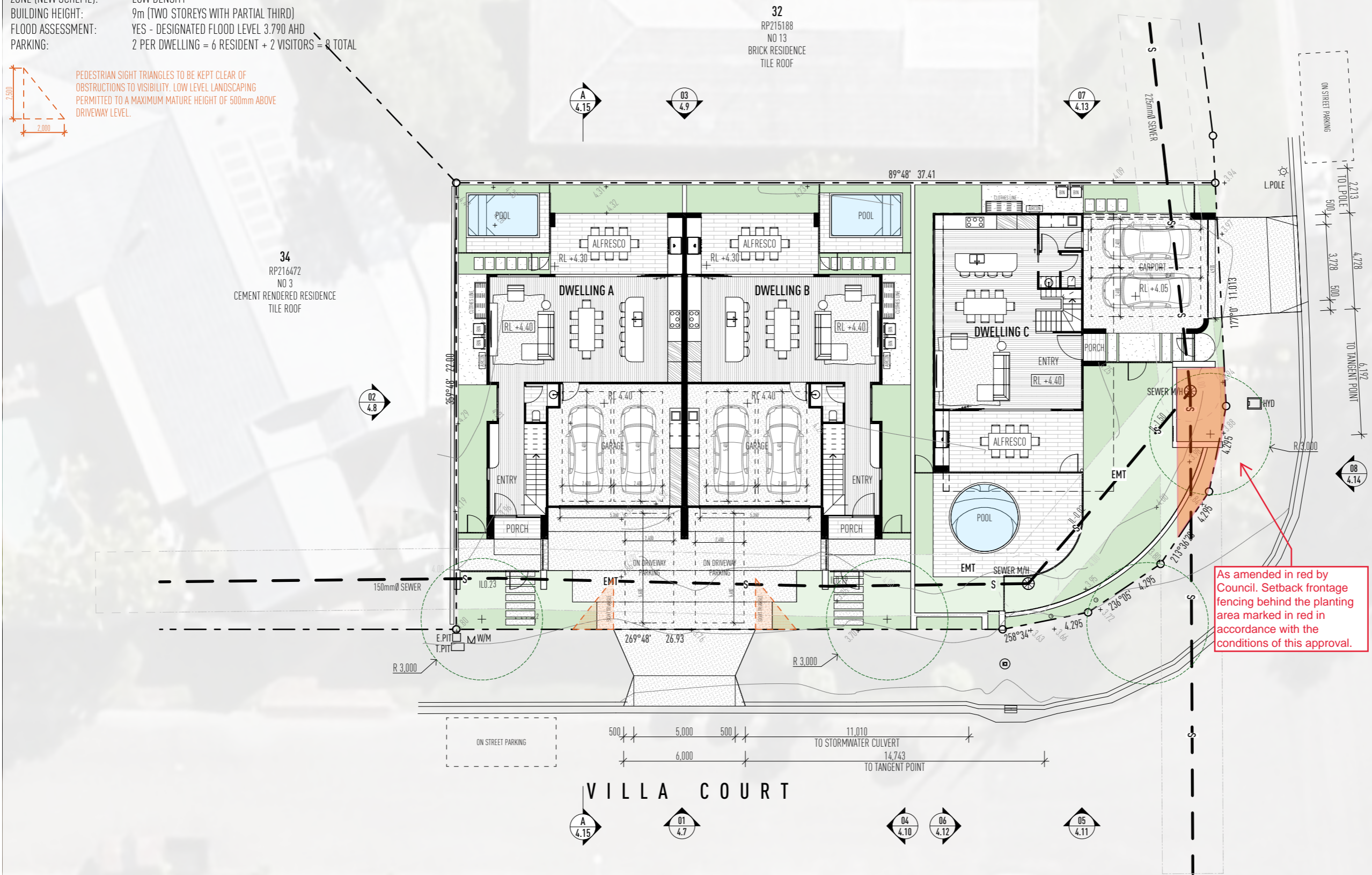
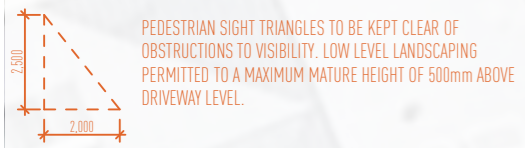




Site Plan - Level 1 (Ground)

SITE SUMMARY

PROPERTY ADDRESS: 15 TANNAH COURT, BROADBEACH WATERS QLD 4218
 LOT & PLAN: LOT 33 ON RP216472
 SITE AREA: 803m²
 ZONE (NEW SCHEME): LOW DENSITY
 BUILDING HEIGHT: 9m (TWO STOREYS WITH PARTIAL THIRD)
 FLOOD ASSESSMENT: YES - DESIGNATED FLOOD LEVEL 3.790 AHD
 PARKING: 2 PER DWELLING = 6 RESIDENT + 2 VISITORS = 8 TOTAL



As amended in red by Council. Setback frontage fencing behind the planting area marked in red in accordance with the conditions of this approval.

PLANS AND DOCUMENTS referred to in the DEVELOPMENT APPROVAL

Application No: OTH/2024/19

Dated: 20 August 2024

Development shall comply with the conditions of approval as detailed in the Decision Notice and Council's Planning Scheme, Local Laws and Planning Policies



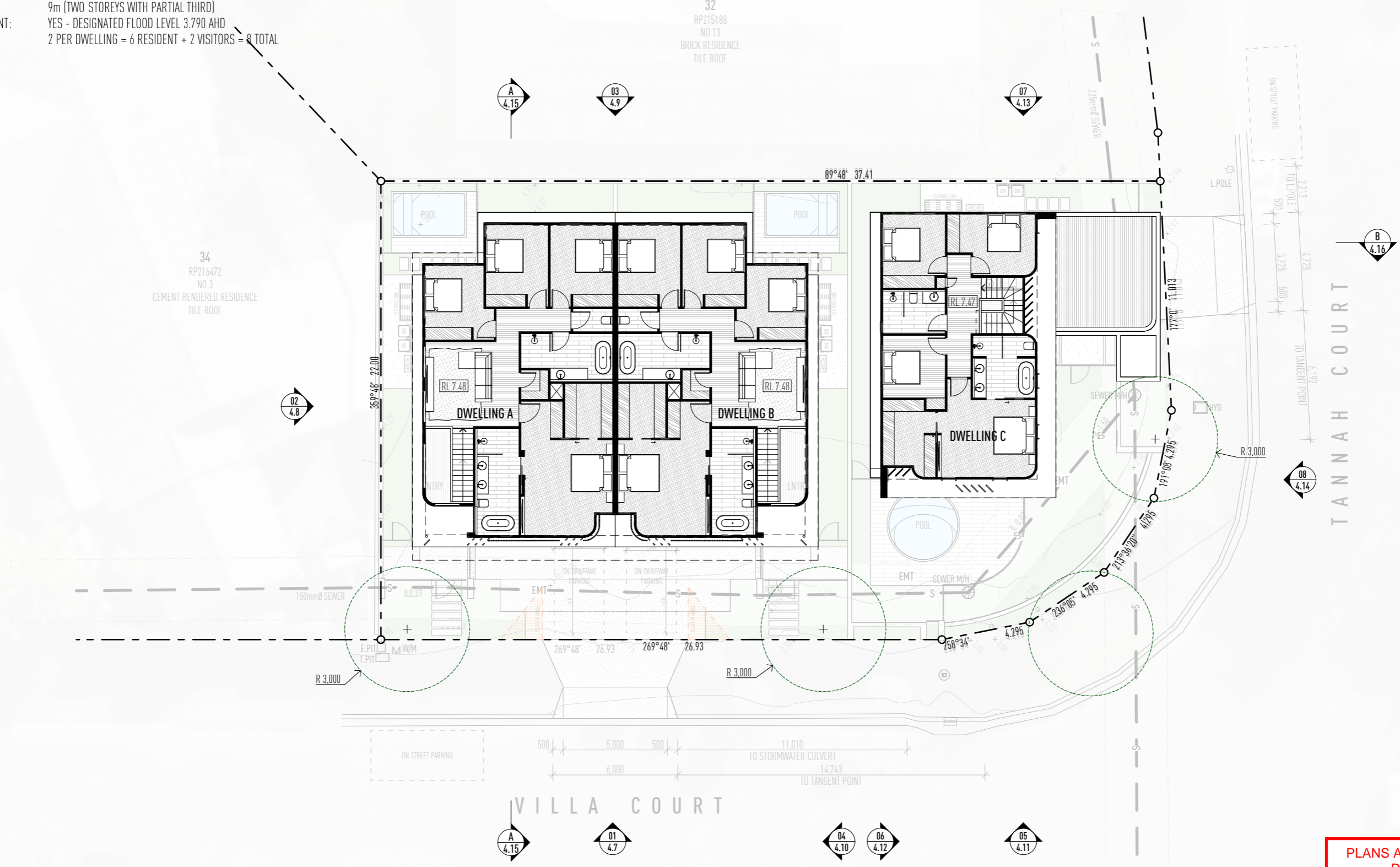
Site Plan - Level 2

SITE SUMMARY

PROPERTY ADDRESS: 15 TANNAH COURT, BROADBEACH WATERS QLD 4218
 LOT & PLAN: LOT 33 ON RP216472
 SITE AREA: 803m²
 ZONE (NEW SCHEME): LOW DENSITY
 BUILDING HEIGHT: 9m (TWO STOREYS WITH PARTIAL THIRD)
 FLOOD ASSESSMENT: YES - DESIGNATED FLOOD LEVEL 3.790 AHD
 PARKING: 2 PER DWELLING = 6 RESIDENT + 2 VISITORS = 8 TOTAL

34
 RP216472
 NO 3
 CEMENT RENDERED RESIDENCE
 TILE ROOF

32
 RP215188
 NO 13
 BRICK RESIDENCE
 TILE ROOF



PLANS AND DOCUMENTS referred to in the DEVELOPMENT APPROVAL

Application No: OTH/2024/19

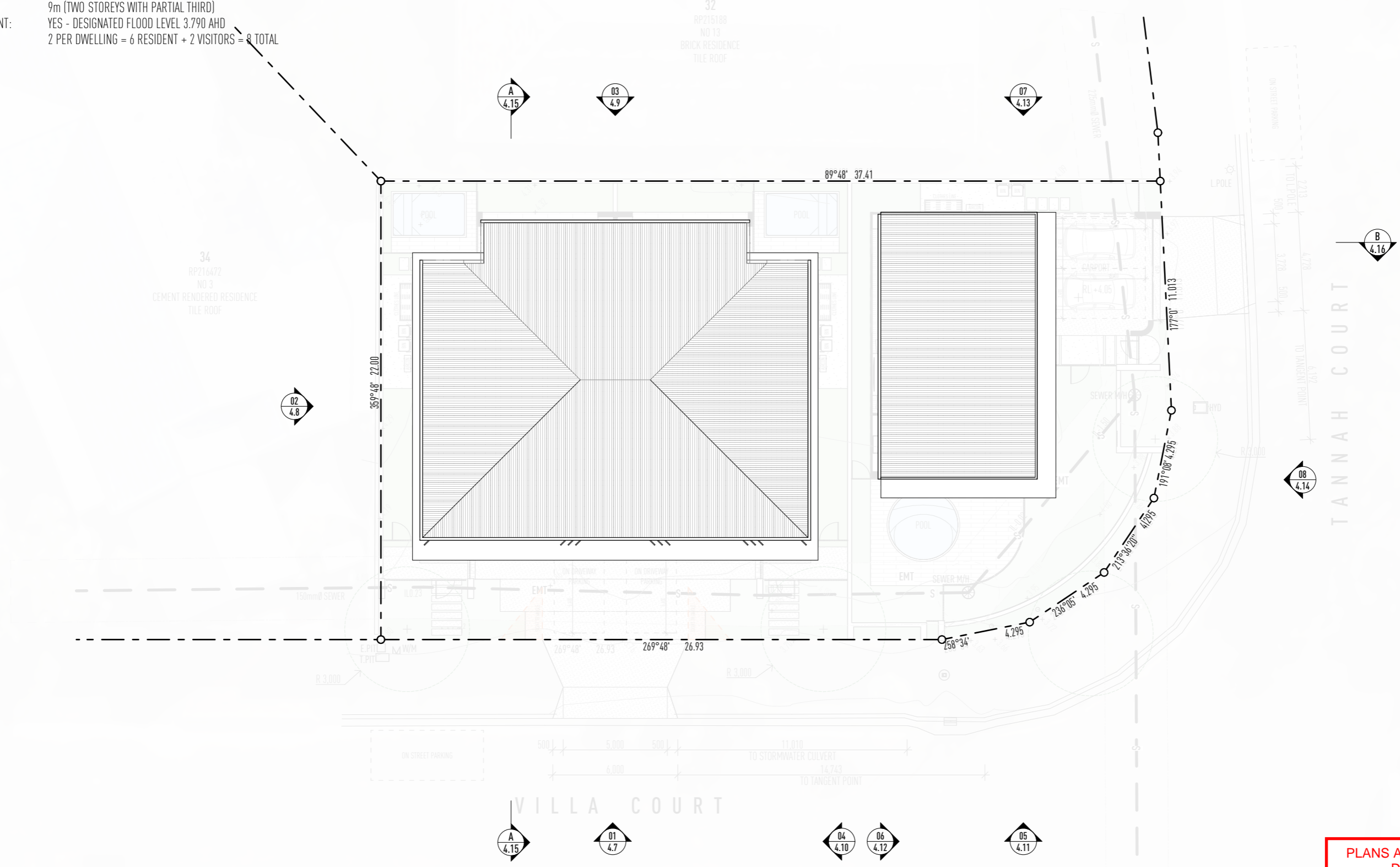
Dated: 20 August 2024

Development shall comply with the conditions of approval as detailed in the Decision Notice and Council's Planning Scheme, Local Laws and Planning Policies



SITE SUMMARY

PROPERTY ADDRESS: 15 TANNAH COURT, BROADBEACH WATERS QLD 4218
 LOT & PLAN: LOT 33 ON RP216472
 SITE AREA: 803m²
 ZONE (NEW SCHEME): LOW DENSITY
 BUILDING HEIGHT: 9m (TWO STOREYS WITH PARTIAL THIRD)
 FLOOD ASSESSMENT: YES - DESIGNATED FLOOD LEVEL 3.790 AHD
 PARKING: 2 PER DWELLING = 6 RESIDENT + 2 VISITORS = 8 TOTAL

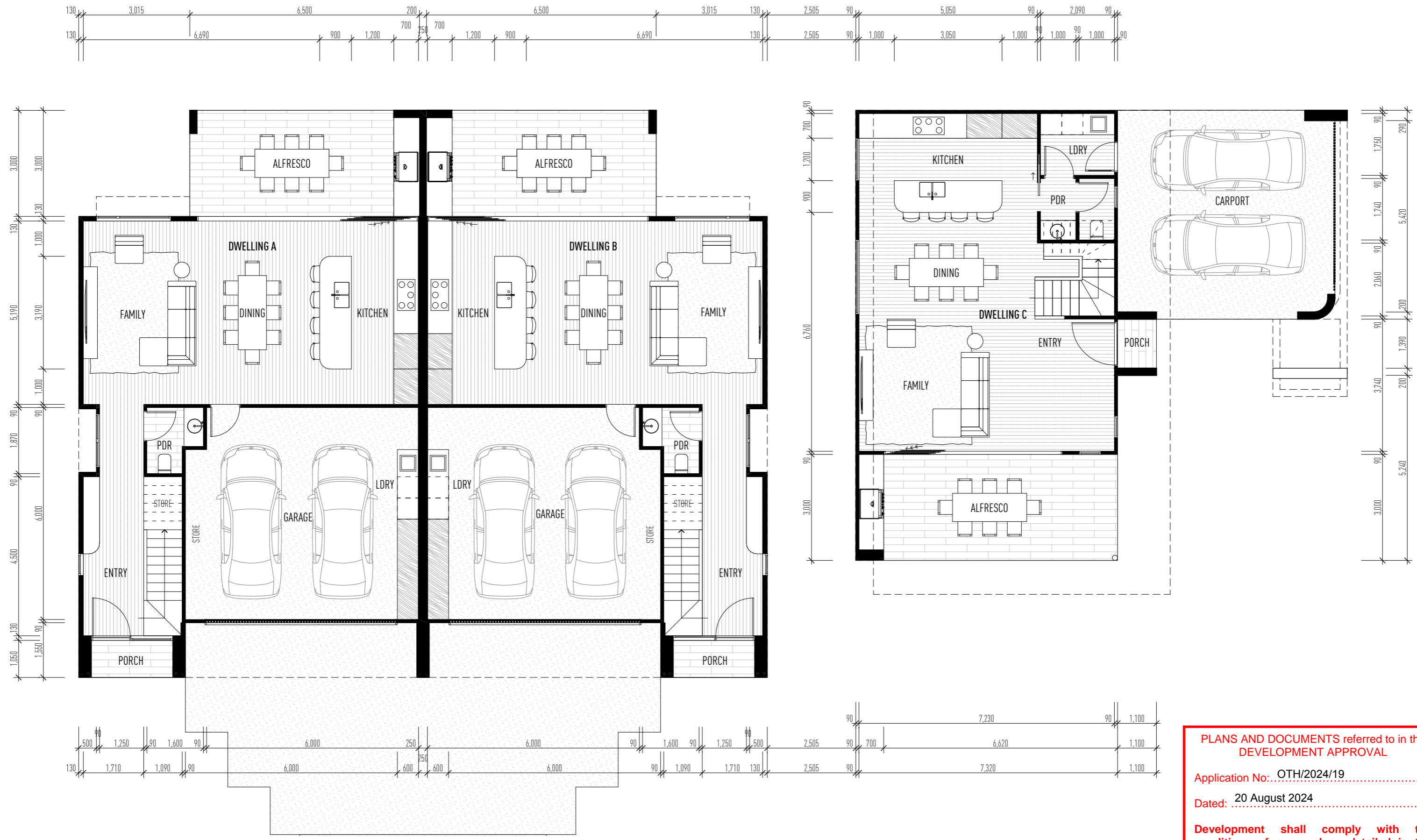


PLANS AND DOCUMENTS referred to in the DEVELOPMENT APPROVAL

Application No: OTH/2024/19

Dated: 20 August 2024

Development shall comply with the conditions of approval as detailed in the Decision Notice and Council's Planning Scheme, Local Laws and Planning Policies

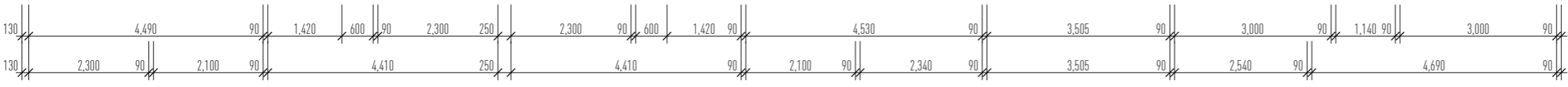
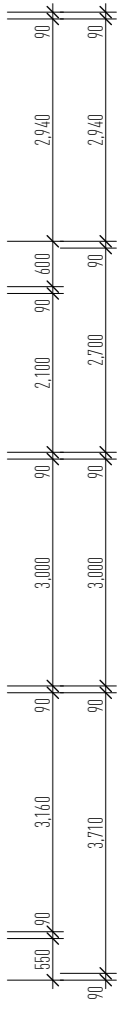
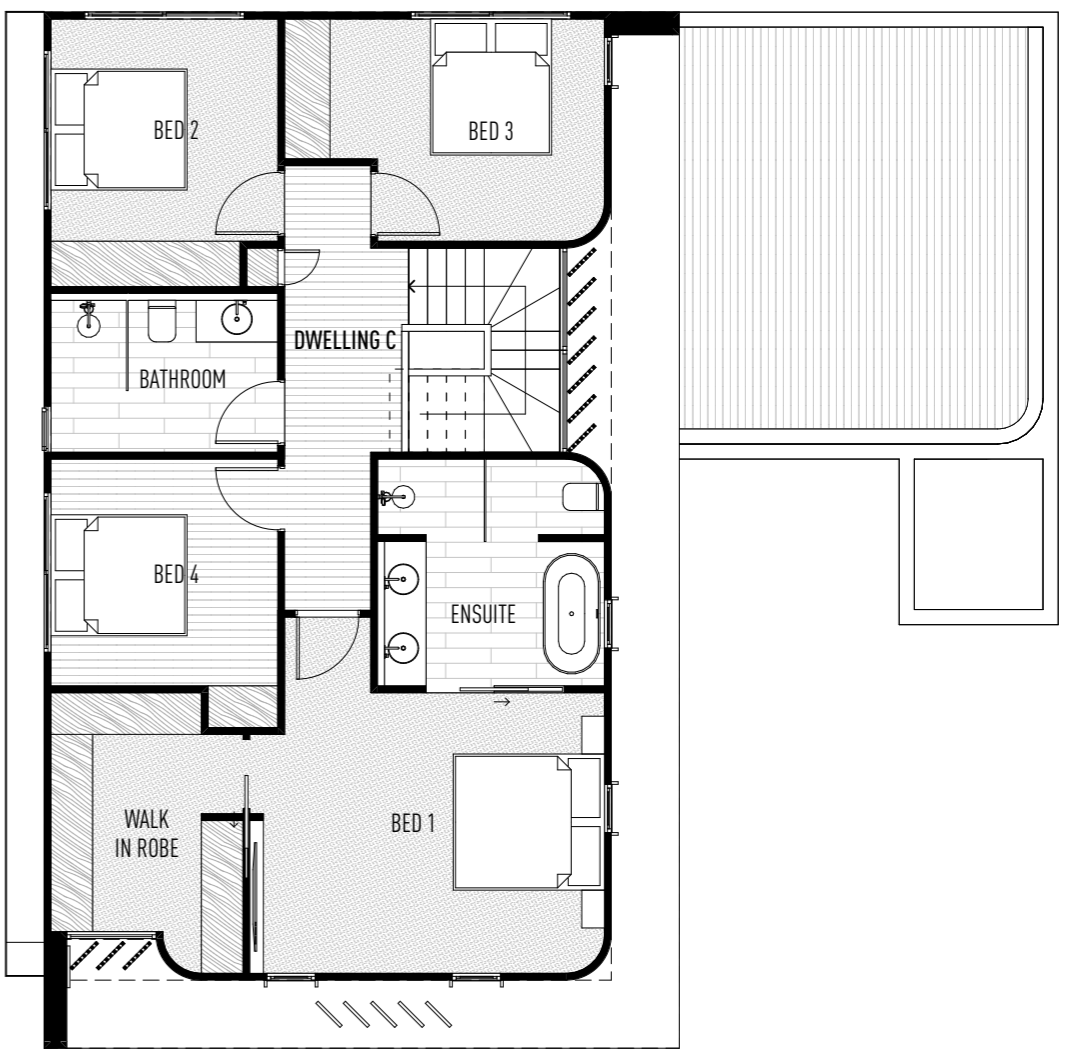
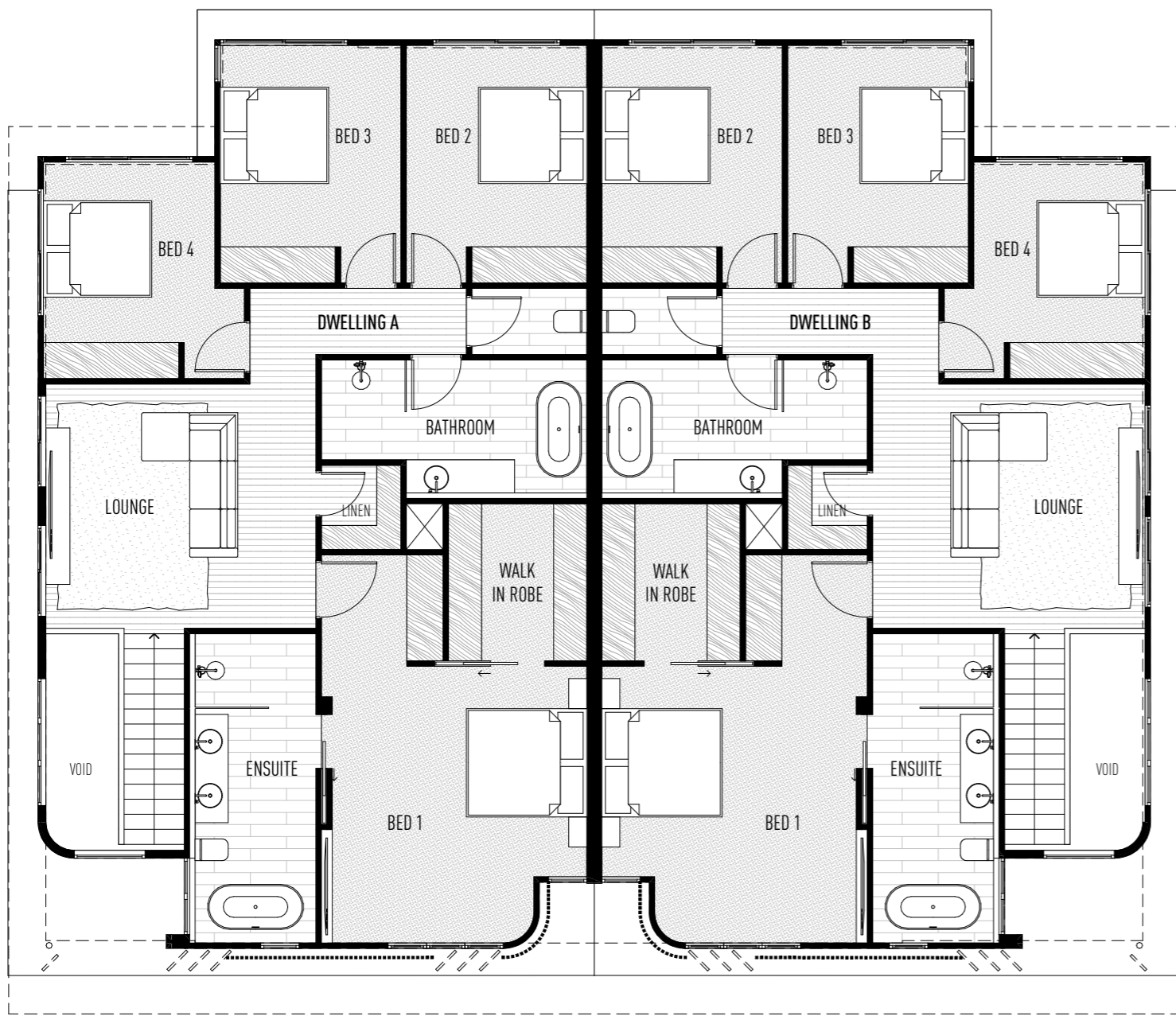
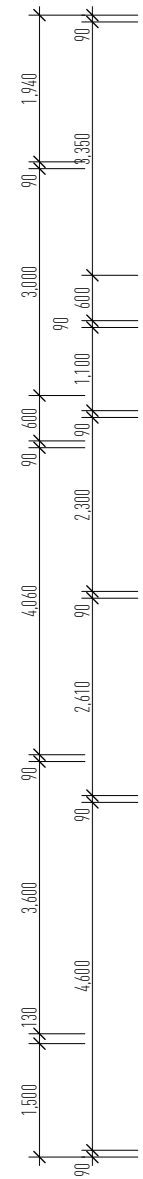
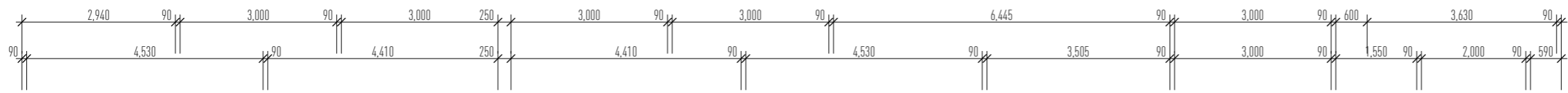


PLANS AND DOCUMENTS referred to in the DEVELOPMENT APPROVAL

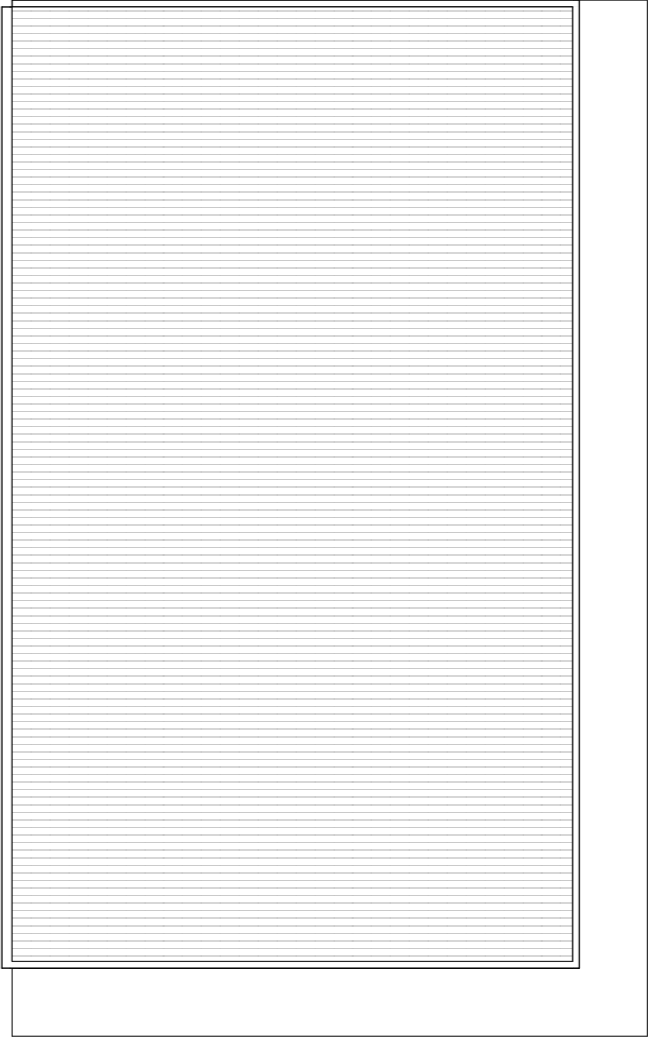
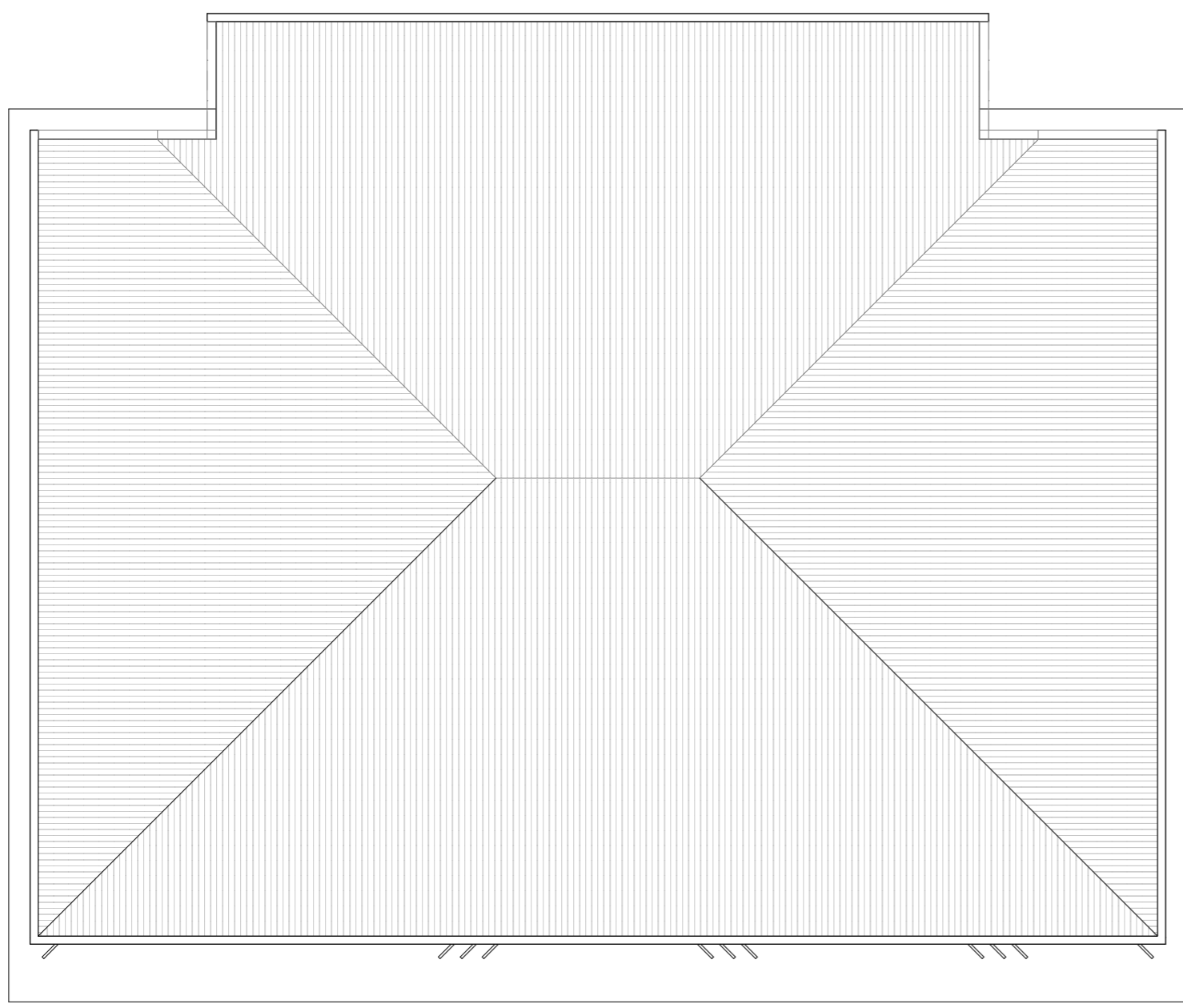
Application No: OTH/2024/19

Dated: 20 August 2024

Development shall comply with the conditions of approval as detailed in the Decision Notice and Council's Planning Scheme, Local Laws and Planning Policies



PLANS AND DOCUMENTS referred to in the DEVELOPMENT APPROVAL
 Application No: OTH/2024/19
 Dated: 20 August 2024
 Development shall comply with the conditions of approval as detailed in the Decision Notice and Council's Planning Scheme, Local Laws and Planning Policies

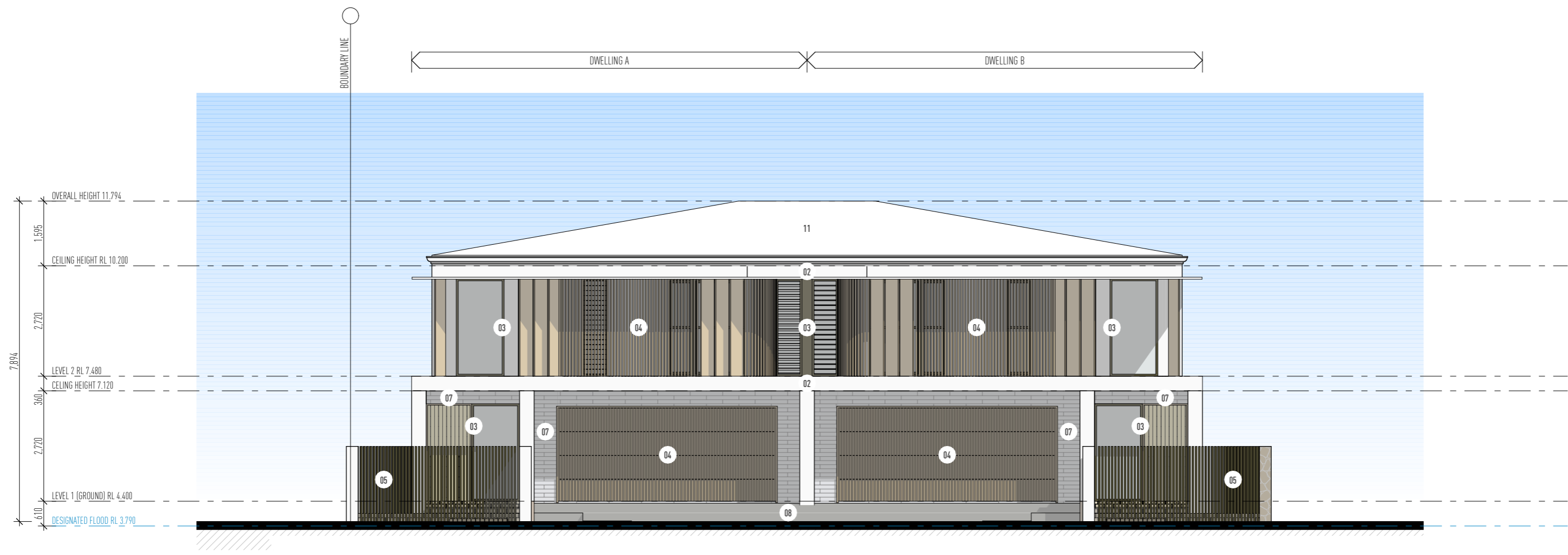


**PLANS AND DOCUMENTS referred to in the
DEVELOPMENT APPROVAL**

Application No: OTH/2024/19

Dated: 20 August 2024

**Development shall comply with the
conditions of approval as detailed in the
Decision Notice and Council's Planning
Scheme, Local Laws and Planning Policies**



PLANS AND DOCUMENTS referred to in the DEVELOPMENT APPROVAL

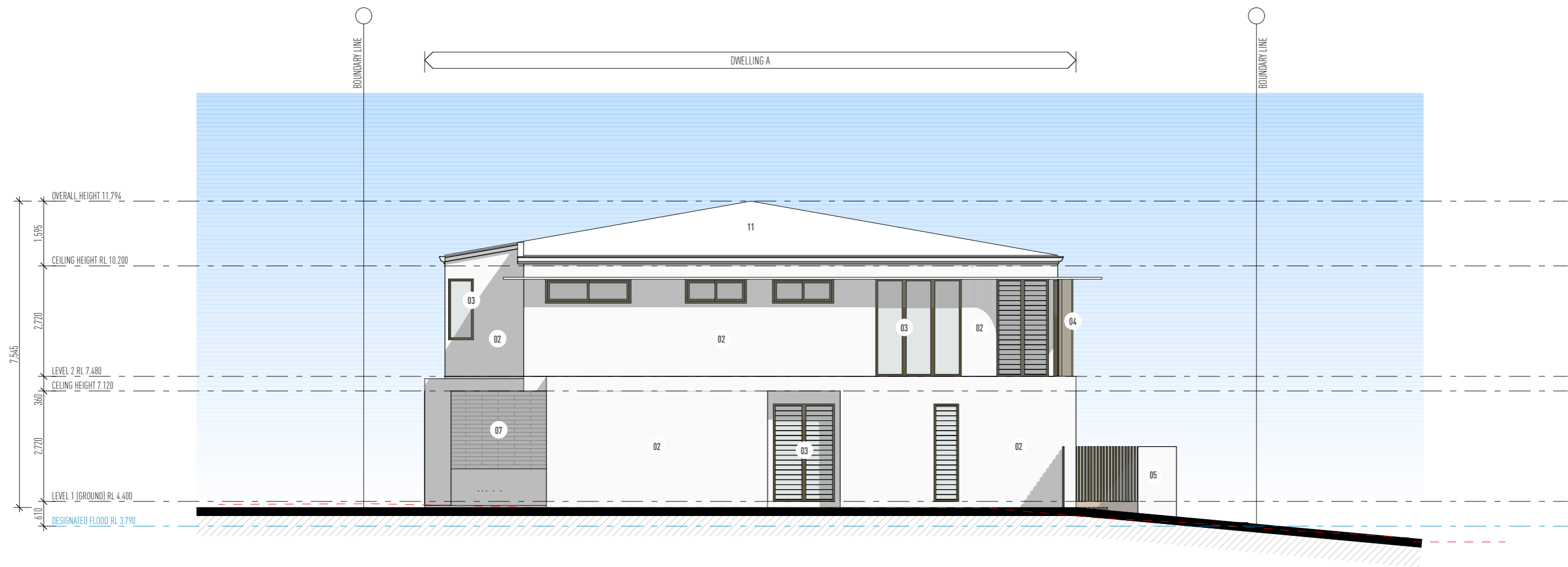
Application No: OTH/2024/19

Dated: 20 August 2024

Development shall comply with the conditions of approval as detailed in the Decision Notice and Council's Planning Scheme, Local Laws and Planning Policies

COLOURS & MATERIALS LEGEND

- 01 RENDER, SELECTED TEXTURE COATED FINISH, MONUMENT OR SIMILAR
- 02 RENDER, SELECTED TEXTURE COATED FINISH, OFF WHITE OR SIMILAR
- 03 WINDOW & DOOR FRAMES, ALUMINIUM, SELECTED POWDER COATED FINISH, LIGHT BRONZE
- 04 BATTENS & BLADES, ALUMINIUM, KNOTWOOD, NORDIC OAK
- 05 FENCE BATTENS, ALUMINIUM, SELECTED POWDER COATED FINISH, LIGHT BRONZE
- 06 STONE CLADDING, ECO OUTDOOR, CANYONFELL
- 07 STONE CLADDING, ECO OUTDOOR, SCALA
- 08 DRIVEWAY, TINTED CONCRETE, BORAL COCONUT
- 09 SHIPLAP CLADDING, ALUMINIUM, KNOTWOOD, NORDIC OAK
- 10 ROOF SHEETING, GUTTERS 7 CAPPINGS, COLORBOND CUSTOM ORB, MONUMENT OR SIMILAR
- 11 ROOF SHEETING, GUTTERS 7 CAPPINGS, COLORBOND CUSTOM ORB, SURF MIST OR SIMILA



PLANS AND DOCUMENTS referred to in the DEVELOPMENT APPROVAL

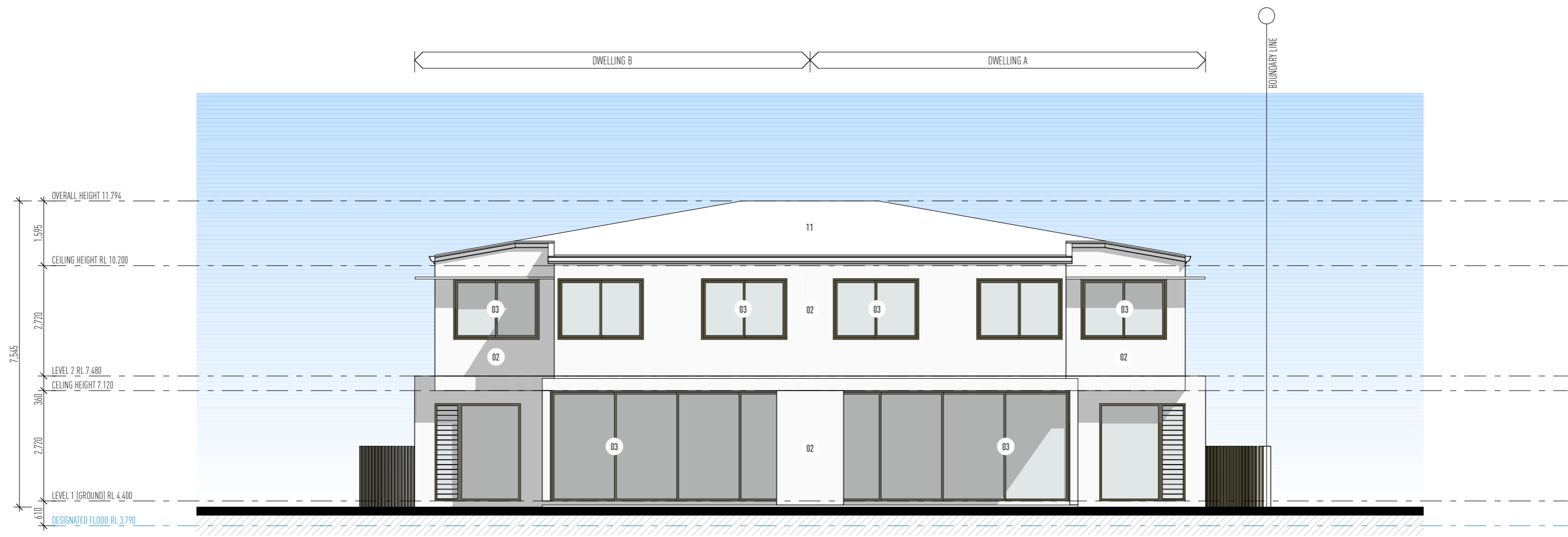
Application No: OTH/2024/19

Dated: 20 August 2024

Development shall comply with the conditions of approval as detailed in the Decision Notice and Council's Planning Scheme, Local Laws and Planning Policies

COLOURS & MATERIALS LEGEND

- 01 RENDER, SELECTED TEXTURE COATED FINISH, MONUMENT OR SIMILAR
- 02 RENDER, SELECTED TEXTURE COATED FINISH, OFF WHITE OR SIMILAR
- 03 WINDOW & DOOR FRAMES, ALUMINIUM, SELECTED POWDER COATED FINISH, LIGHT BRONZE
- 04 BATTENS & BLADES, ALUMINIUM, KNOTWOOD, NORDIC OAK
- 05 FENCE BATTENS, ALUMINIUM, SELECTED POWDER COATED FINISH, LIGHT BRONZE
- 06 STONE CLADDING, ECO OUTDOOR, CANYONFELL
- 07 STONE CLADDING, ECO OUTDOOR, SCALA
- 08 DRIVEWAY, TINTED CONCRETE, BORAL COCONUT
- 09 SHIPLAP CLADDING, ALUMINIUM, KNOTWOOD, NORDIC OAK
- 10 ROOF SHEETING, GUTTERS 7 CAPPINGS, COLORBOND CUSTOM ORB, MONUMENT OR SIMILAR
- 11 ROOF SHEETING, GUTTERS 7 CAPPINGS, COLORBOND CUSTOM ORB, SURF MIST OR SIMILA



PLANS AND DOCUMENTS referred to in the DEVELOPMENT APPROVAL

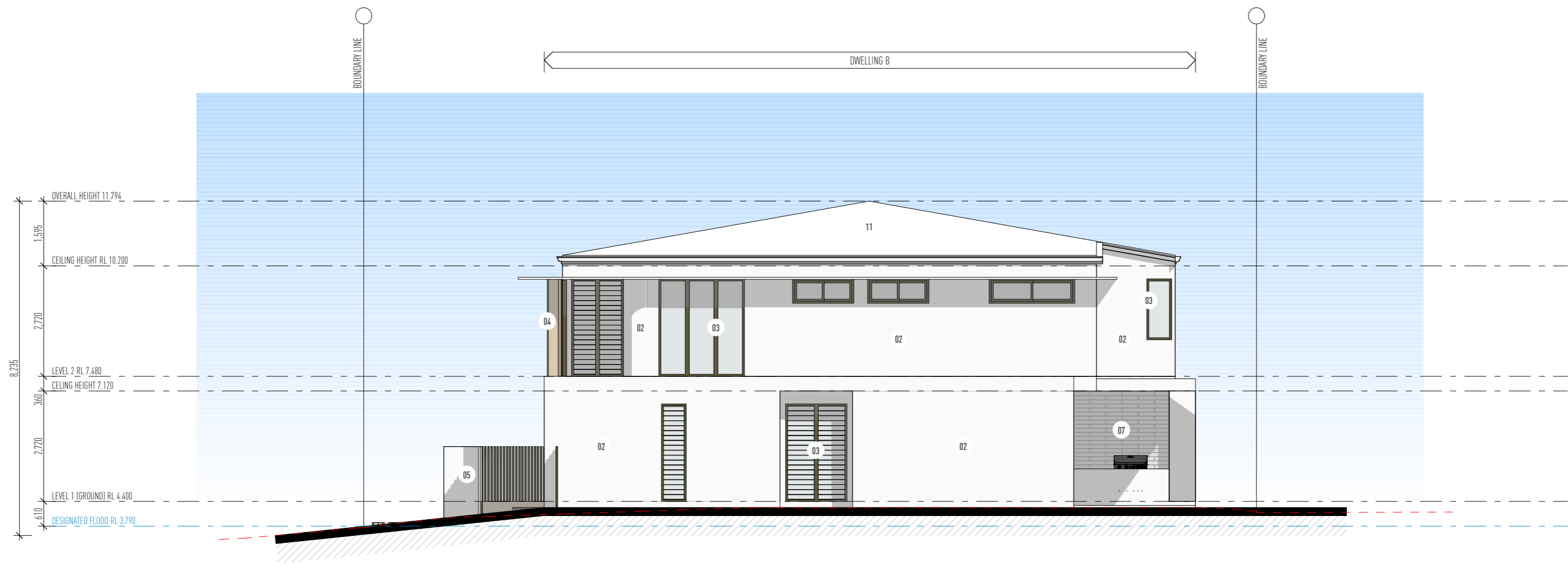
Application No: OTH/2024/19

Dated: 20 August 2024

Development shall comply with the conditions of approval as detailed in the Decision Notice and Council's Planning Scheme, Local Laws and Planning Policies

COLOURS & MATERIALS LEGEND

- 01 RENDER, SELECTED TEXTURE COATED FINISH, MONUMENT OR SIMILAR
- 02 RENDER, SELECTED TEXTURE COATED FINISH, OFF WHITE OR SIMILAR
- 03 WINDOW & DOOR FRAMES, ALUMINIUM, SELECTED POWDER COATED FINISH, LIGHT BRONZE
- 04 BATTENS & BLADES, ALUMINIUM, KNOTWOOD, NORDIC OAK
- 05 FENCE BATTENS, ALUMINIUM, SELECTED POWDER COATED FINISH, LIGHT BRONZE
- 06 STONE CLADDING, ECO OUTDOOR, CANYONFELL
- 07 STONE CLADDING, ECO OUTDOOR, SCALA
- 08 DRIVEWAY, TINTED CONCRETE, BORAL COCONUT
- 09 SHIPLAP CLADDING, ALUMINIUM, KNOTWOOD, NORDIC OAK
- 10 ROOF SHEETING, GUTTERS 7 CAPPINGS, COLORBOND CUSTOM ORB, MONUMENT OR SIMILAR
- 11 ROOF SHEETING, GUTTERS 7 CAPPINGS, COLORBOND CUSTOM ORB, SURF MIST OR SIMILA



PLANS AND DOCUMENTS referred to in the DEVELOPMENT APPROVAL

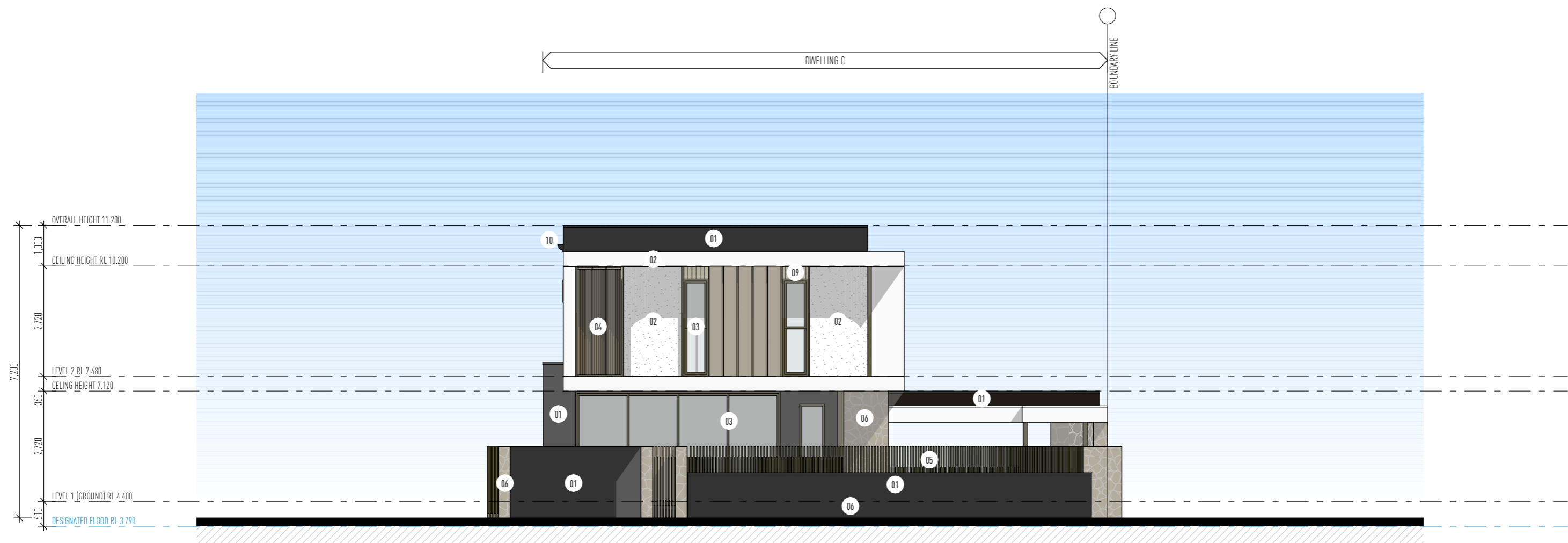
Application No: OTH/2024/19

Dated: 20 August 2024

Development shall comply with the conditions of approval as detailed in the Decision Notice and Council's Planning Scheme, Local Laws and Planning Policies

COLOURS & MATERIALS LEGEND

- 01 RENDER, SELECTED TEXTURE COATED FINISH, MONUMENT OR SIMILAR
- 02 RENDER, SELECTED TEXTURE COATED FINISH, OFF WHITE OR SIMILAR
- 03 WINDOW & DOOR FRAMES, ALUMINIUM, SELECTED POWDER COATED FINISH, LIGHT BRONZE
- 04 BATTENS & BLADES, ALUMINIUM, KNOTWOOD, NORDIC OAK
- 05 FENCE BATTENS, ALUMINIUM, SELECTED POWDER COATED FINISH, LIGHT BRONZE
- 06 STONE CLADDING, ECO OUTDOOR, CANYONFELL
- 07 STONE CLADDING, ECO OUTDOOR, SCALA
- 08 DRIVEWAY, TINTED CONCRETE, BORAL COCONUT
- 09 SHIPLAP CLADDING, ALUMINIUM, KNOTWOOD, NORDIC OAK
- 10 ROOF SHEETING, GUTTERS 7 CAPPINGS, COLORBOND CUSTOM ORB, MONUMENT OR SIMILAR
- 11 ROOF SHEETING, GUTTERS 7 CAPPINGS, COLORBOND CUSTOM ORB, SURF MIST OR SIMILA



PLANS AND DOCUMENTS referred to in the DEVELOPMENT APPROVAL

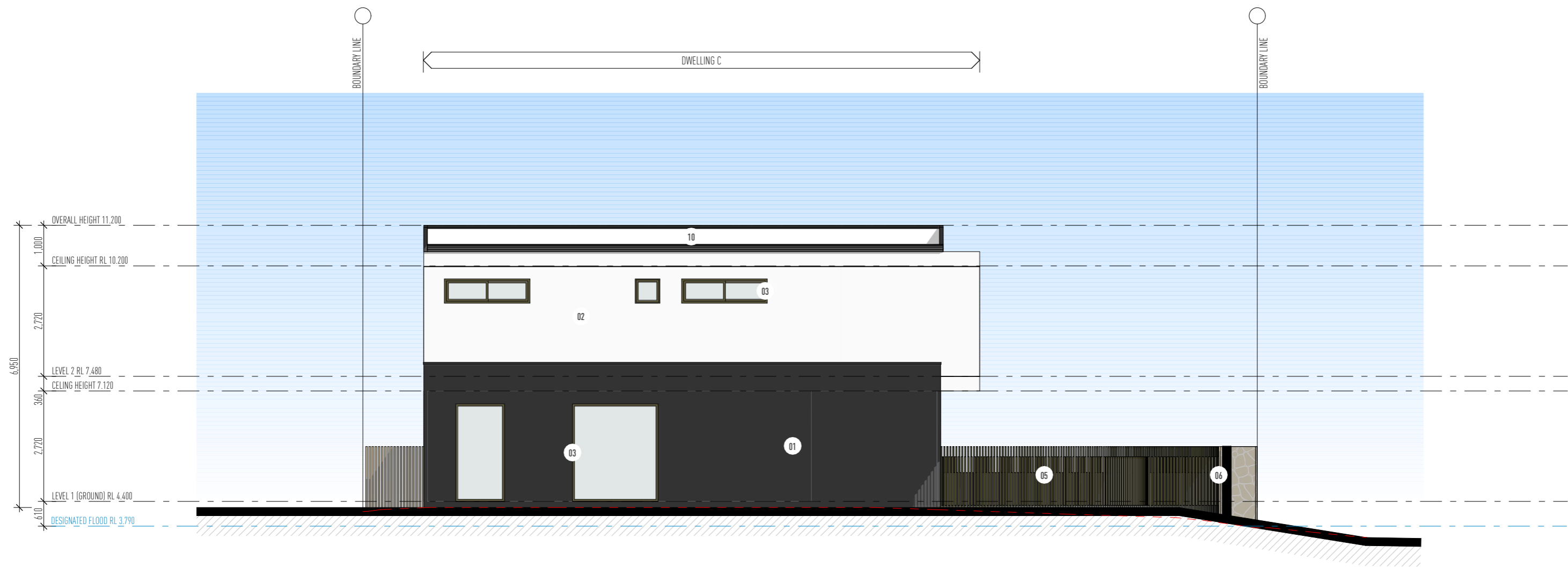
Application No: OTH/2024/19

Dated: 20 August 2024

Development shall comply with the conditions of approval as detailed in the Decision Notice and Council's Planning Scheme, Local Laws and Planning Policies

COLOURS & MATERIALS LEGEND

- 01 RENDER, SELECTED TEXTURE COATED FINISH, MONUMENT OR SIMILAR
- 02 RENDER, SELECTED TEXTURE COATED FINISH, OFF WHITE OR SIMILAR
- 03 WINDOW & DOOR FRAMES, ALUMINIUM, SELECTED POWDER COATED FINISH, LIGHT BRONZE
- 04 BATTENS & BLADES, ALUMINIUM, KNOTWOOD, NORDIC OAK
- 05 FENCE BATTENS, ALUMINIUM, SELECTED POWDER COATED FINISH, LIGHT BRONZE
- 06 STONE CLADDING, ECO OUTDOOR, CANYONFELL
- 07 STONE CLADDING, ECO OUTDOOR, SCALA
- 08 DRIVEWAY, TINTED CONCRETE, BORAL COCONUT
- 09 SHIPLAP CLADDING, ALUMINIUM, KNOTWOOD, NORDIC OAK
- 10 ROOF SHEETING, GUTTERS 7 CAPPINGS, COLORBOND CUSTOM ORB, MONUMENT OR SIMILAR
- 11 ROOF SHEETING, GUTTERS 7 CAPPINGS, COLORBOND CUSTOM ORB, SURF MIST OR SIMILA



PLANS AND DOCUMENTS referred to in the DEVELOPMENT APPROVAL

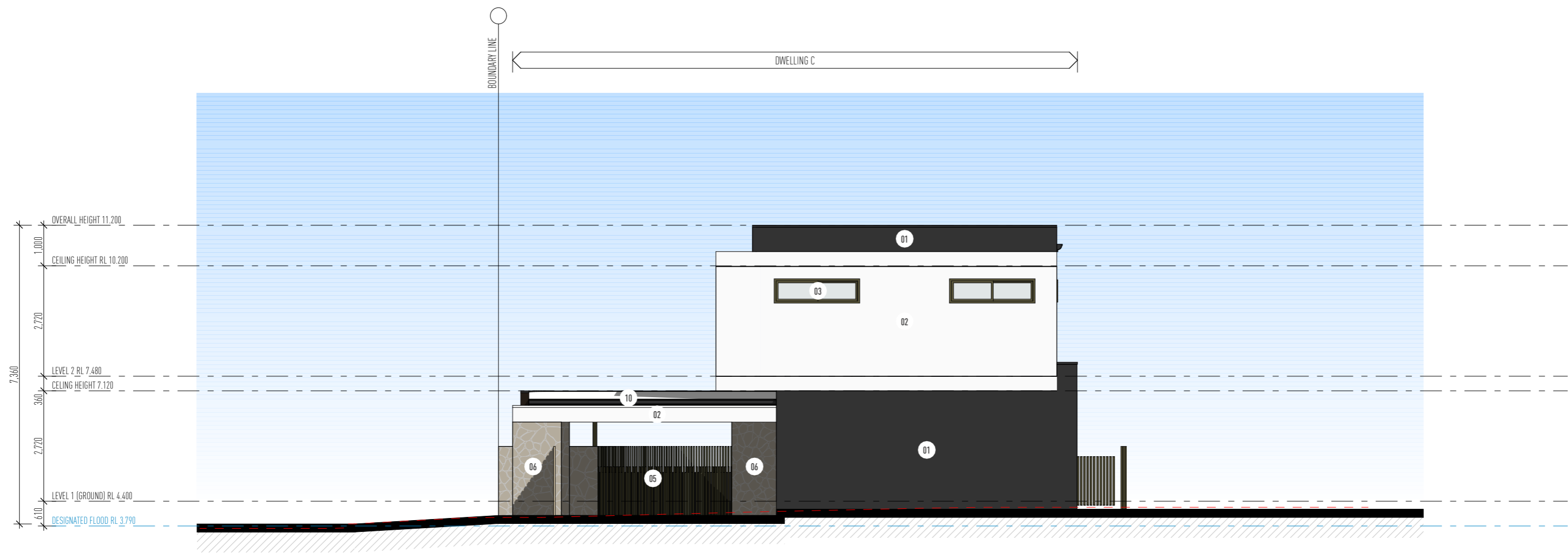
Application No: OTH/2024/19

Dated: 20 August 2024

Development shall comply with the conditions of approval as detailed in the Decision Notice and Council's Planning Scheme, Local Laws and Planning Policies

COLOURS & MATERIALS LEGEND

- 01 RENDER, SELECTED TEXTURE COATED FINISH, MONUMENT OR SIMILAR
- 02 RENDER, SELECTED TEXTURE COATED FINISH, OFF WHITE OR SIMILAR
- 03 WINDOW & DOOR FRAMES, ALUMINIUM, SELECTED POWDER COATED FINISH, LIGHT BRONZE
- 04 BATTENS & BLADES, ALUMINIUM, KNOTWOOD, NORDIC OAK
- 05 FENCE BATTENS, ALUMINIUM, SELECTED POWDER COATED FINISH, LIGHT BRONZE
- 06 STONE CLADDING, ECO OUTDOOR, CANYONFELL
- 07 STONE CLADDING, ECO OUTDOOR, SCALA
- 08 DRIVEWAY, TINTED CONCRETE, BORAL COCONUT
- 09 SHIPLAP CLADDING, ALUMINIUM, KNOTWOOD, NORDIC OAK
- 10 ROOF SHEETING, GUTTERS 7 CAPPINGS, COLORBOND CUSTOM ORB, MONUMENT OR SIMILAR
- 11 ROOF SHEETING, GUTTERS 7 CAPPINGS, COLORBOND CUSTOM ORB, SURF MIST OR SIMILA



PLANS AND DOCUMENTS referred to in the DEVELOPMENT APPROVAL

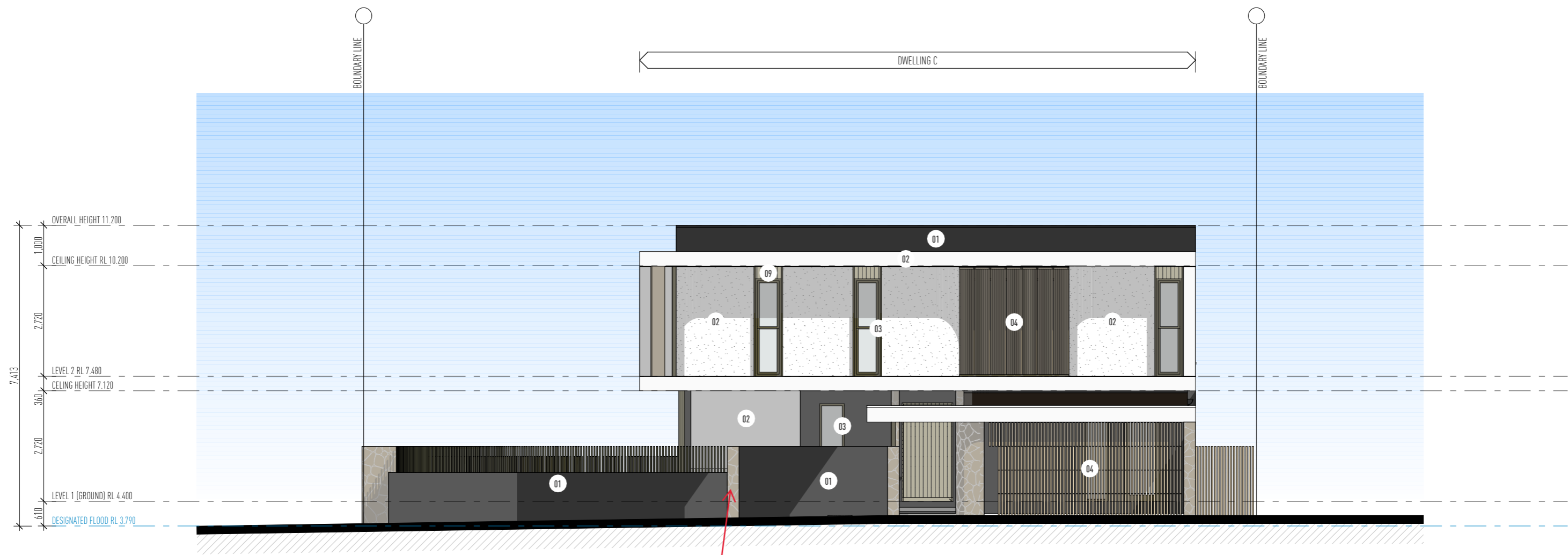
Application No: OTH/2024/19

Dated: 20 August 2024

Development shall comply with the conditions of approval as detailed in the Decision Notice and Council's Planning Scheme, Local Laws and Planning Policies

COLOURS & MATERIALS LEGEND

- 01 RENDER, SELECTED TEXTURE COATED FINISH, MONUMENT OR SIMILAR
- 02 RENDER, SELECTED TEXTURE COATED FINISH, OFF WHITE OR SIMILAR
- 03 WINDOW & DOOR FRAMES, ALUMINIUM, SELECTED POWDER COATED FINISH, LIGHT BRONZE
- 04 BATTENS & BLADES, ALUMINIUM, KNOTWOOD, NORDIC OAK
- 05 FENCE BATTENS, ALUMINIUM, SELECTED POWDER COATED FINISH, LIGHT BRONZE
- 06 STONE CLADDING, ECO OUTDOOR, CANYONFELL
- 07 STONE CLADDING, ECO OUTDOOR, SCALA
- 08 DRIVEWAY, TINTED CONCRETE, BORAL COCONUT
- 09 SHIPLAP CLADDING, ALUMINIUM, KNOTWOOD, NORDIC OAK
- 10 ROOF SHEETING, GUTTERS 7 CAPPINGS, COLORBOND CUSTOM ORB, MONUMENT OR SIMILAR
- 11 ROOF SHEETING, GUTTERS 7 CAPPINGS, COLORBOND CUSTOM ORB, SURF MIST OR SIMILA

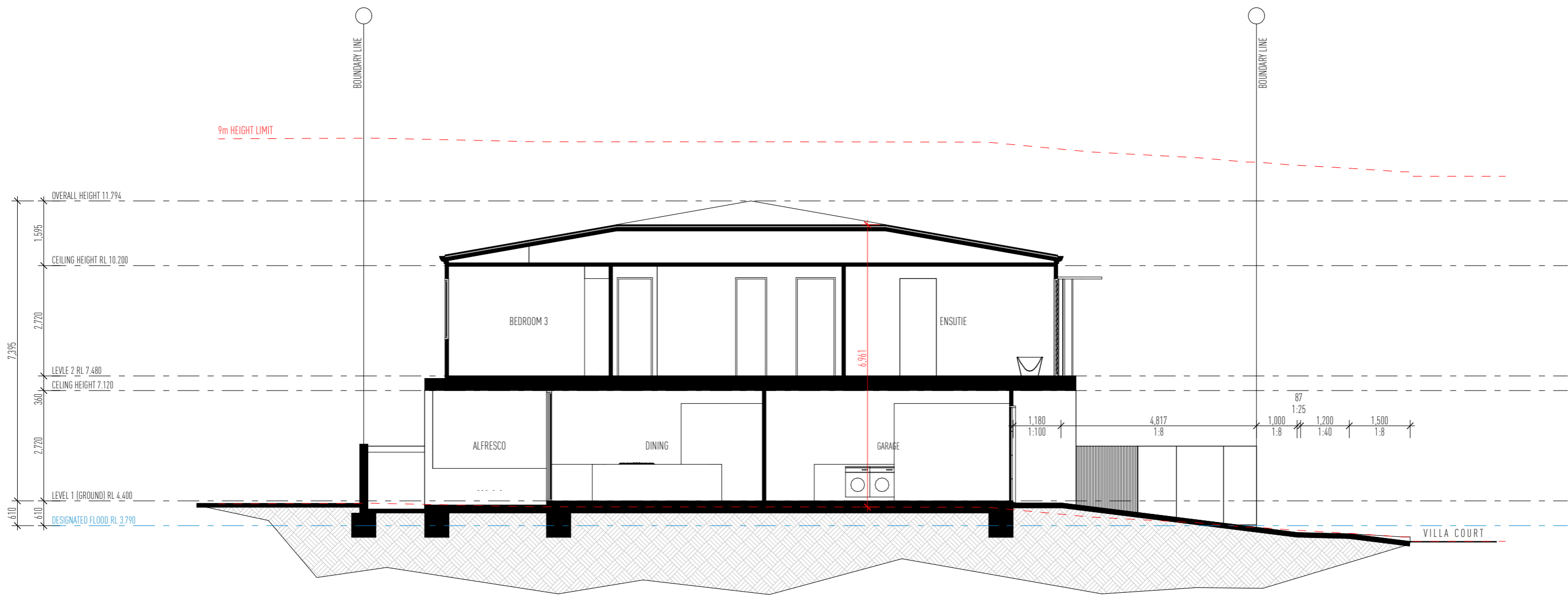


As amended in red by Council. Setback frontage fencing behind the planting area marked in red in accordance with the conditions of this approval.

PLANS AND DOCUMENTS referred to in the DEVELOPMENT APPROVAL
 Application No: OTH/2024/19
 Dated: 20 August 2024
Development shall comply with the conditions of approval as detailed in the Decision Notice and Council's Planning Scheme, Local Laws and Planning Policies

COLOURS & MATERIALS LEGEND

- 01 RENDER, SELECTED TEXTURE COATED FINISH, MONUMENT OR SIMILAR
- 02 RENDER, SELECTED TEXTURE COATED FINISH, OFF WHITE OR SIMILAR
- 03 WINDOW & DOOR FRAMES, ALUMINIUM, SELECTED POWDER COATED FINISH, LIGHT BRONZE
- 04 BATTENS & BLADES, ALUMINIUM, KNOTWOOD, NORDIC OAK
- 05 FENCE BATTENS, ALUMINIUM, SELECTED POWDER COATED FINISH, LIGHT BRONZE
- 06 STONE CLADDING, ECO OUTDOOR, CANYONFELL
- 07 STONE CLADDING, ECO OUTDOOR, SCALA
- 08 DRIVEWAY, TINTED CONCRETE, BORAL COCONUT
- 09 SHIPLAP CLADDING, ALUMINIUM, KNOTWOOD, NORDIC OAK
- 10 ROOF SHEETING, GUTTERS 7 CAPPINGS, COLORBOND CUSTOM ORB, MONUMENT OR SIMILAR
- 11 ROOF SHEETING, GUTTERS 7 CAPPINGS, COLORBOND CUSTOM ORB, SURF MIST OR SIMILA

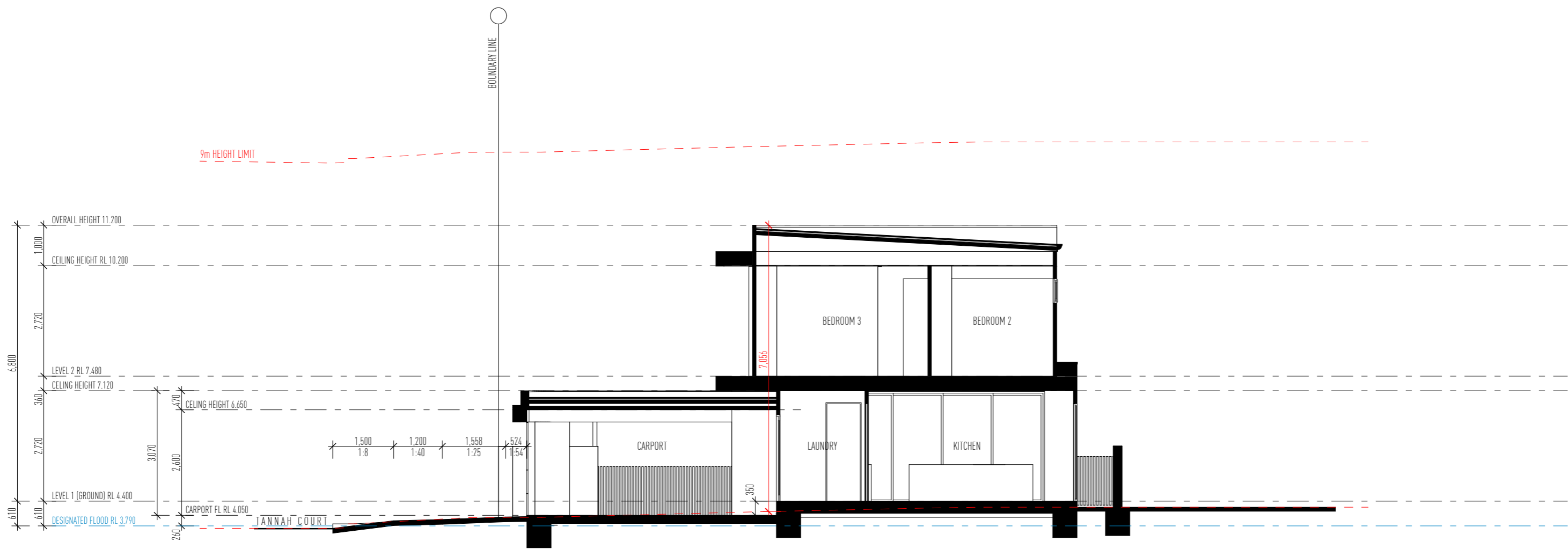


PLANS AND DOCUMENTS referred to in the DEVELOPMENT APPROVAL

Application No: OTH/2024/19

Dated: 20 August 2024

Development shall comply with the conditions of approval as detailed in the Decision Notice and Council's Planning Scheme, Local Laws and Planning Policies



PLANS AND DOCUMENTS referred to in the DEVELOPMENT APPROVAL

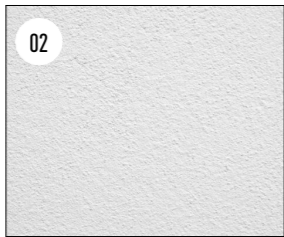
Application No: OTH/2024/19

Dated: 20 August 2024

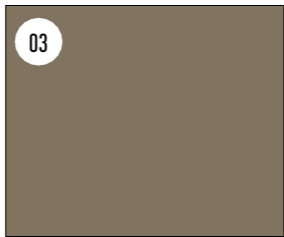
Development shall comply with the conditions of approval as detailed in the Decision Notice and Council's Planning Scheme, Local Laws and Planning Policies



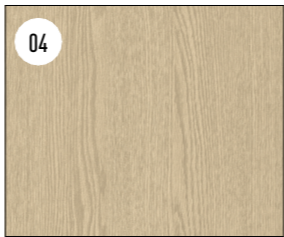
01
RENDER
SELECTED TEXTURE COATED FINISH
MONUMENT OR SIMILAR



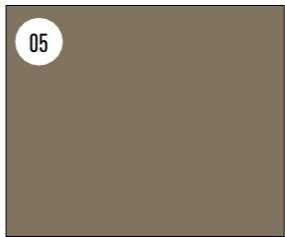
02
RENDER
SELECTED TEXTURE COATED FINISH
OFF WHITE OR SIMILAR



03
WINDOW & DOOR FRAMES
ALUMINIUM, SELECTED POWDER COATED FINISH
LIGHT BRONZE



04
BATTENS & BLADES
ALUMINIUM - KNOTWOOD
NORDIC OAK



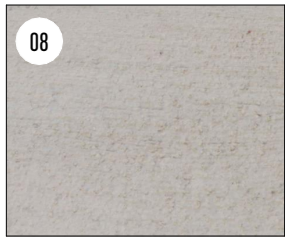
05
FENCE BATTENS
ALUMINIUM, SELECTED POWDER COATED FINISH
LIGHT BRONZE



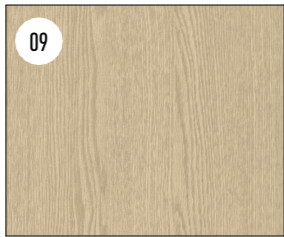
06
STONE CLADDING
ECO OUTDOOR
CANYONFELL



07
STONE CLADDING
ECO OUTDOOR
SCALA



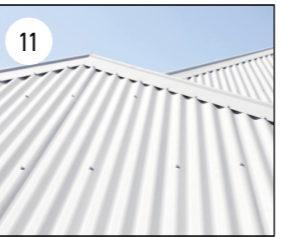
08
DRIVEWAYS
TINTED CONCRETE
BORAL COCONUT



09
SIPLAP CLADDING
ALUMINIUM - KNOTWOOD
NORDIC OAK



10
ROOF SHEETING, GUTTERS & CAPPINGS
COLORBOND CUSTOM ORB
MONUMENT OR SIMILAR



11
ROOF SHEETING, GUTTERS & CAPPINGS
COLORBOND CUSTOM ORB
SURF MIST OR SIMILAR

PLANS AND DOCUMENTS referred to in the DEVELOPMENT APPROVAL

Application No: OTH/2024/19

Dated: 20 August 2024

Development shall comply with the conditions of approval as detailed in the Decision Notice and Council's Planning Scheme, Local Laws and Planning Policies